

# SAMPLE BALLOT

## OFFICIAL PRESIDENTIAL PREFERENCE PRIMARY

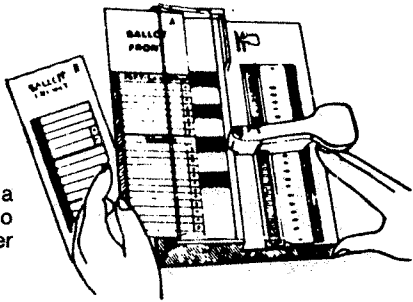
### CITRUS COUNTY, FLORIDA

MARCH 8, 1988

## INSTRUCTIONS TO VOTER: HOW TO VOTE YOUR BALLOT CARD

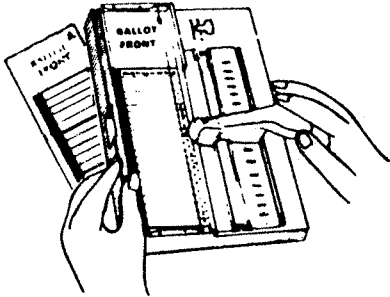
### STEP 1

Vote only one ballot card at a time. Slip ballot all the way into tray, UNDER clear plastic cover from left side of machine.



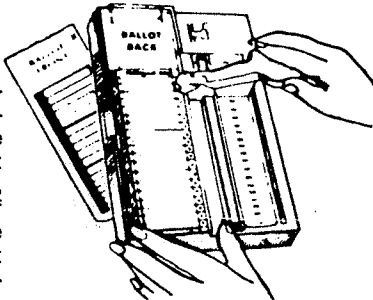
### STEP 2

Move the chrome punch lever so that the red pointer is to the right of the candidate of your choice. Depress the lever which will punch out the cross + in the voting square to the right of the candidate's name. To vote on any proposition appearing on the ballot, PUNCH OUT THE CROSS + in the voting square to the right of the words "FOR" or "AGAINST".



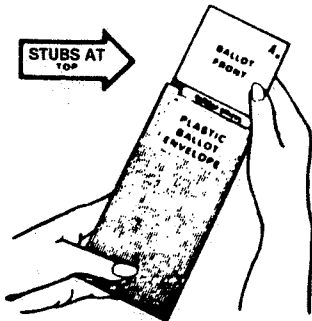
### STEP 3

Repeat Step 2 with each remaining ballot card. All distinguishing marks or erasures are forbidden and make the ballot void. If you make a mistake, tear or deface any portion of your ballot card, replace the card in the plastic ballot envelope and return to the election official for another ballot.



### STEP 4

After you have completed voting, return the punch head to the top position. Place your ballot card(s) in the plastic envelope with the numbered stub(s) at the top and hand it to the election official, who shall then in the presence of the voter, remove the numbered stub(s). The voter may then personally deposit the voted ballot(s) in the ballot box or direct the election official to do so in the voter's presence.



REPUBLICAN PRIMARY BALLOT  
OFFICIAL PRESIDENTIAL PREFERENCE  
CITRUS COUNTY, FLORIDA  
MARCH 8, 1988

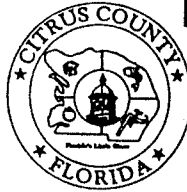
Stub No. 1

Stub No. 2

R 01



**OFFICIAL PRESIDENTIAL PREFERENCE  
PRIMARY BALLOT  
REPUBLICAN PARTY  
CITRUS COUNTY, FLORIDA  
MARCH 8, 1988**



(DETACH THIS STUB)

CITRUS COUNTY REPUBLICAN PRES. PREF. PRIMARY 3/8/88

FOR PRESIDENT	(VOTE FOR ONE)	
GEORGE BUSH	▶	+
BOB DOLE	▶	+
PETE DU PONT	▶	+
ALEXANDER M. HAIG, JR.	▶	+
JACK KEMP	▶	+
PAT ROBERTSON	▶	+

**END OF BALLOT**

9-103